

Paul Hardy's Annex Tunebook 2017

Introduction

This tunebook contains tunes waiting to be incorporated into Paul Hardy's Session Tunebook, because they are new (to me) or been substantially improved since the 2017 edition. They are tunes that I have learned to play on my English concertina, that are played at folk music sessions, particularly around Cambridge, England and Redlands, California. They should also be playable on other folk melody instruments such as fiddle, whistle, flute, mandolin or dulcimer.

Most are traditional tunes from the British Isles, many of Celtic origin, including many Irish, English and Scottish dance tunes, but others are from an eclectic mix of sources. Some have been adapted from Internet resources, in abc, midi or visual score formats. Others have been learned by ear or handouts from various sessions in the UK and US. All are believed free of current copyright (unless noted explicitly), or else appear to have been placed in the public domain as part of the ongoing live folk music tradition. Please let me know if you are the owner of any that are under access restrictions and I'll remove them.

I have tried to present simple versions of most tunes, without much decoration and interpretation, so add your own triplets, grace notes and variations. I have included guitar chords, often based initially on computer generated ones - use these as guidance, not definitive! Tunes in 4/4 time that have the rhythm indication "Hornpipe" should usually be 'swung' - lengthen the first and shorten the second in every pair of quavers - as in "Thursday". Elsewhere these are sometimes written as 'dotted quaver, semiquaver', but that ratio of 3:1 seems too high - perhaps try for around 2:1.

This tunebook has been prepared using the abcm2ps software, with help from abc2midi, abcmus, Melody Assistant, ABCexplorer, and EasyABC. A big thank you goes to those creative and dedicated people who give their time to create and maintain low-cost or free and open source software for abc music editing and output.

The current version of this and the full session tunebook, in ABC and in PDF forms, is downloadable for free from Paul's web site at www.paulhardy.net, or you can order there a printed and bound copy of the full tunebook from Lulu.com. See there also the previous Annex Tunebook 2016 which updates the Session Tunebook 2016 to include the 2017 content, and also similar earlier versions.

Copyright Paul Hardy (paul@paulhardy.net) 2004-2018.

This work is licenced under a Creative Commons "Attribution Non-Commercial Share Alike" cc by-nc-sa licence.

See <http://creativecommons.org/licenses/by-nc-sa/3.0/> - Contact Paul Hardy for commercial licensing terms.

Original Annex 2017 version 30 August 2017, this version of 3 May 2018.



Polka
♩ = 140

Idbury Hill

Trad.
Bledington

Musical score for Idbury Hill, Polka, 4/4 time, 140 bpm. The score consists of three staves of music with chord symbols: Dm, C, Dm, A7, Dm, Dm, G, Dm, Am, Dm, Dm, C, Dm, A7, Dm.

Polka
♩ = 80

The Lambs Fold Vale

Pant Corlan Yr Wyn
Let Now the Harp

Trad
Wales

Musical score for The Lambs Fold Vale, Polka, 2/2 time, 80 bpm. The score consists of four staves of music with chord symbols: G, D7, G, D7, G, C, Am, G, D7, G, G, D7, Em, A7, D, D7, G, D7, G, D7, G, G, C, Am, G, D7, G.

Polka
♩ = 110

The Muffin Man

Come, Let us Dance and Sing

Trad.
England

Musical score for The Muffin Man, Polka, 2/2 time, 110 bpm. The score consists of three staves of music with chord symbols: G, Am, D, G, Am, D, G, G, Am, D, G, Am, D, G, D, G, Am, D, G, Am, D, G.

Air
♩ = 70

The Northern Lass Lord Frog and Lady Mouse

Trad. Playford 1669
England, NorthWest

Am G Am C Am C Am

C G C Em C

Am C G Am C Am C Am

Detailed description: This block contains the musical notation for 'The Northern Lass'. It consists of three staves of music in 6/8 time. The first staff has a key signature of one flat (Bb) and a common time signature. The second staff continues the melody. The third staff concludes the piece. Chord symbols are placed above the notes: Am, G, Am, C, Am, C, Am, C, G, C, Am, C, Am, C, Am.

Hornpipe
♩ = 150

Penny on the Water

Trad.
England

G D7 G Em D7 G

C D7 G Em Am D7 G

C D7 G Em Am D7 G

Detailed description: This block contains the musical notation for 'Penny on the Water'. It consists of three staves of music in 4/4 time with a key signature of one sharp (F#). The first staff has a common time signature. The second and third staves continue the melody. Chord symbols are placed above the notes: G, D7, G, Em, D7, G, C, D7, G, Em, Am, D7, G, C, D7, G, Em, Am, D7, G.

Jig
♩ = 100

Perfect Cure

Trad.
England

D G A D A

D G A D A7 D

D A G A D A A7

D A G A D A7 D

Detailed description: This block contains the musical notation for 'Perfect Cure'. It consists of four staves of music in 6/8 time with a key signature of two sharps (F# and C#). The first staff has a common time signature. The second, third, and fourth staves continue the melody. Chord symbols are placed above the notes: D, G, A, D, A, D, G, A, D, A7, D, D, A, G, A, D, A, A7, D, A, G, A, D, A7, D.

Polka
♩ = 100

La Roulante The LNB Polka

Jean Blanchard, 1980s
A 'Roulante' was a wheeled kitchen to feed troops in WWI.

Musical score for 'La Roulante' in G major, 2/2 time. The score consists of four staves of music. The first two staves form the first phrase, and the last two staves form the second phrase. Chords are indicated above the notes: D, C, D, G, D, A7, D, A7, D.

Polka
♩ = 110

Spanish Lady Dublin City

Trad. Ireland

Musical score for 'Spanish Lady' in G major, 2/2 time. The score consists of four staves of music. Chords are indicated above the notes: D, G, D, A7, D, D, D, G, D, A7, D, D, G, D, Em, D, Bm, G, D, A7, D.

March
♩ = 130

Step and Fetch Her

*Trad. Morris
England, Bampton*

Musical score for 'Step and Fetch Her' in G major, 4/4 time. The score consists of five staves of music. Chords are indicated above the notes: G, D7, G, C, G, D7, G, D7, G, D, G, D, G, D, G, D7, G, D, G, D, G, D, G, D, G, D, G, D7, G.

Reel
♩ = 160

Tink A Tink

Trad. Mittell 1799
England, Kent

Chord progression for Tink A Tink (Reel):
 Staff 1: G C D G C G
 Staff 2: G C D G C D G
 Staff 3: G G C G C G

Triple Hornpipe
♩ = 120

Well Hall

Playford, 1679
England

Chord progression for Well Hall (Triple Hornpipe):
 Staff 1: G D7 G Em D
 Staff 2: Em G C G Am D7
 Staff 3: Am C D D7
 Staff 4: G C D G D7 G

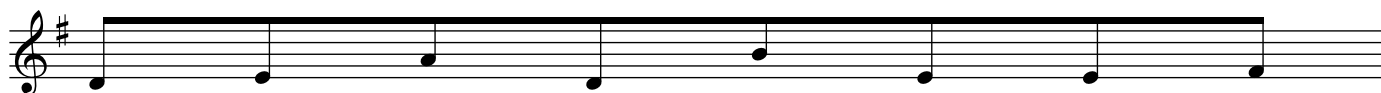
Hornpipe
♩ = 140

Worcestershire Hornpipe

Trad.
England, Worcestershire

Chord progression for Worcestershire Hornpipe (Hornpipe):
 Staff 1: G C G D7
 Staff 2: G C G D7 G
 Staff 3: G C G D
 Staff 4: G C G D7 G

None

Errata - Minor corrections to tunes

The following minor corrections have been noted to be made to tunes in the 2017 Session Tunebook (30 August 2017 edition).

Elsley's Waltz - out of sequence on page 45 - should be on page 51.

The following minor corrections have been noted to be made to tunes in the 2017 Session Tunebook (03 October 2017 edition).

Cream Pot - Line 1 change Em chord to C. Line 3 change Em chord to A7.

Earl's Chair - Line 1 delete anacrusis and insert it at end of line 2 to complete last bar. Line 3 delete anacrusis.

The Friendly Visit - Line 2 last bar add G chord.

Garryowen - Last bar resolve to G with G chord to finish.

Mrs Jamieson's Favourite - Lines 1,2 & 4 - Add Bm chord to bar 3 second half.

Shrewsbury Lassies - Line 2 bar 2 - Am chord should be A.

Spanish Patriots - Line 2 last bar - Move D chord from beat 3 to beat 2.

Top of Cork Road - Line 3 last note should be C natural, not sharp

Index of Titles

Come, Let us Dance and Sing	2
Dublin City	4
Errata - Minor corrections to tunes	6
Idbury Hill	2
The Lambs Fold Vale	2
The LNB Polka	4
Lord Frog and Lady Mouse	3
The Muffin Man	2
The Northern Lass	3
Pant Corlan Yr Wyn	2
Penny on the Water	3
Perfect Cure	3
La Roulante	4
Spanish Lady	4
Step and Fetch Her	4
Tink A Tink	5
Well Hall	5
Worcestershire Hornpipe	5