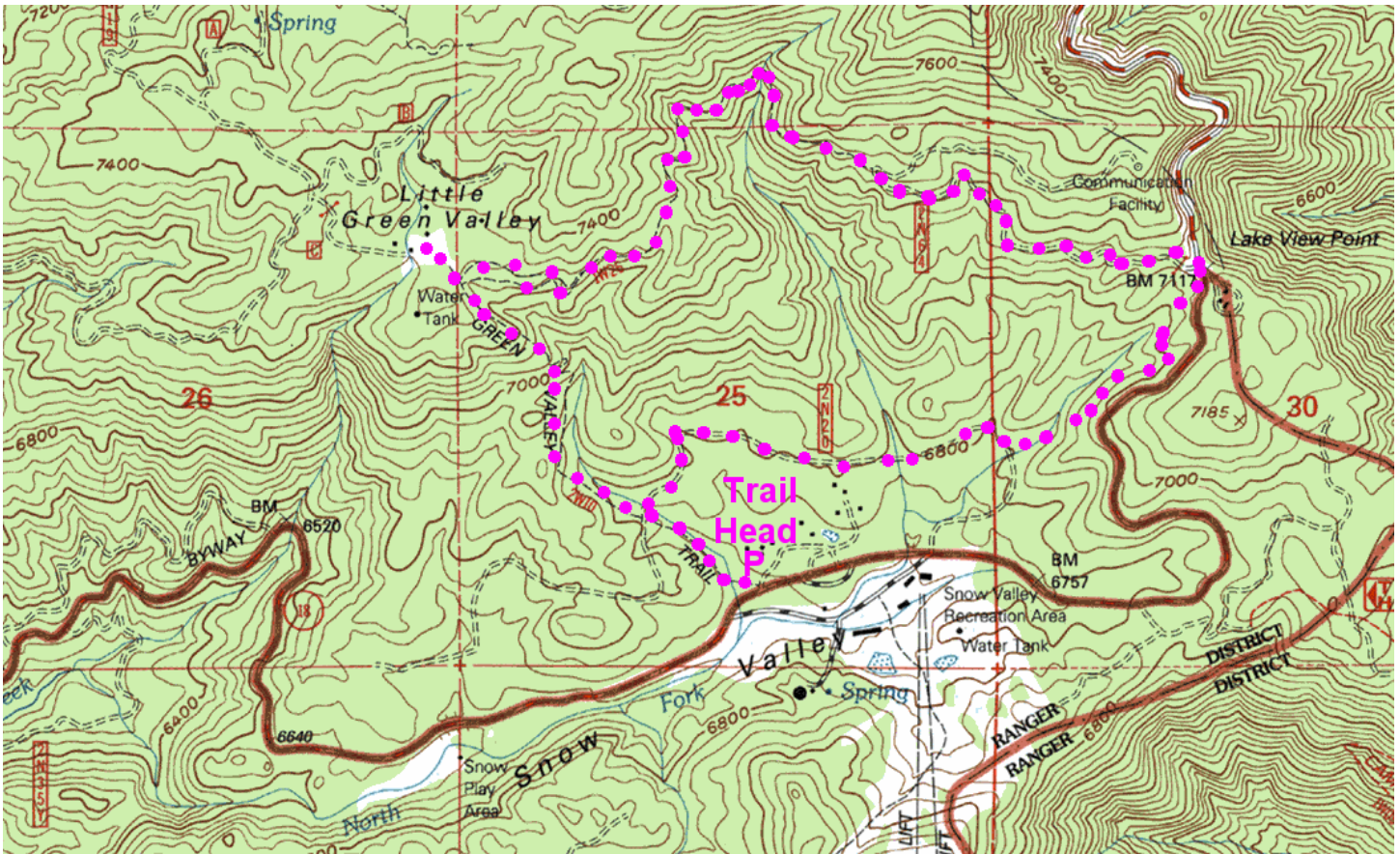


Snow Valley – Little Green Valley Hike

(2W10, 2N20, Lake View Point, 2W64, Little Green Valley)



Location

- Coming from Running Springs on SR18, go just past the first Snow Valley Ski turn (on the right). If you get to the turn for the Nordic Ski Area, you've gone too far!
- Turn left on a small dirt road towards house 35150. Almost immediately turn left for the trailhead parking – a very short distance.
- If coming from Big Bear on SR18, then go past first turn (on left) for Snow Valley Ski, and the turn on right for Nordic Ski Area, and take the next dirt road on right, then left to the trailhead parking.

Meeting Point

Meet just before 9am in the parking for the Little Green Valley trailhead, by this sign. Remember you need an Adventure Pass for parking. Bring water, snacks, sunscreen, hat, insect repellent and hiking boots.



Hike

As shown in pink on the map above - about 5.5 miles and 400 feet ascent. It starts with gentle ascent along Little Green Valley trail 2W10, then contours on 2N20, and uphill to Lake View Point, contours along 2W64, a short up to Little Green Valley, then a steady downhill back to the trailhead on 2W10.

Paul Hardy, 12 September 2006